

TAXING UNIT: 25

LOTS 1,5,6 & 10
BLOCK 12 PLAT C &
O'NEILL SUBDIVISION

OF LOTS 3,4,7 & 8
IN OGDEN CITY

SCALE 1" = 50'

SEE PAGE 14

28TH

STREET

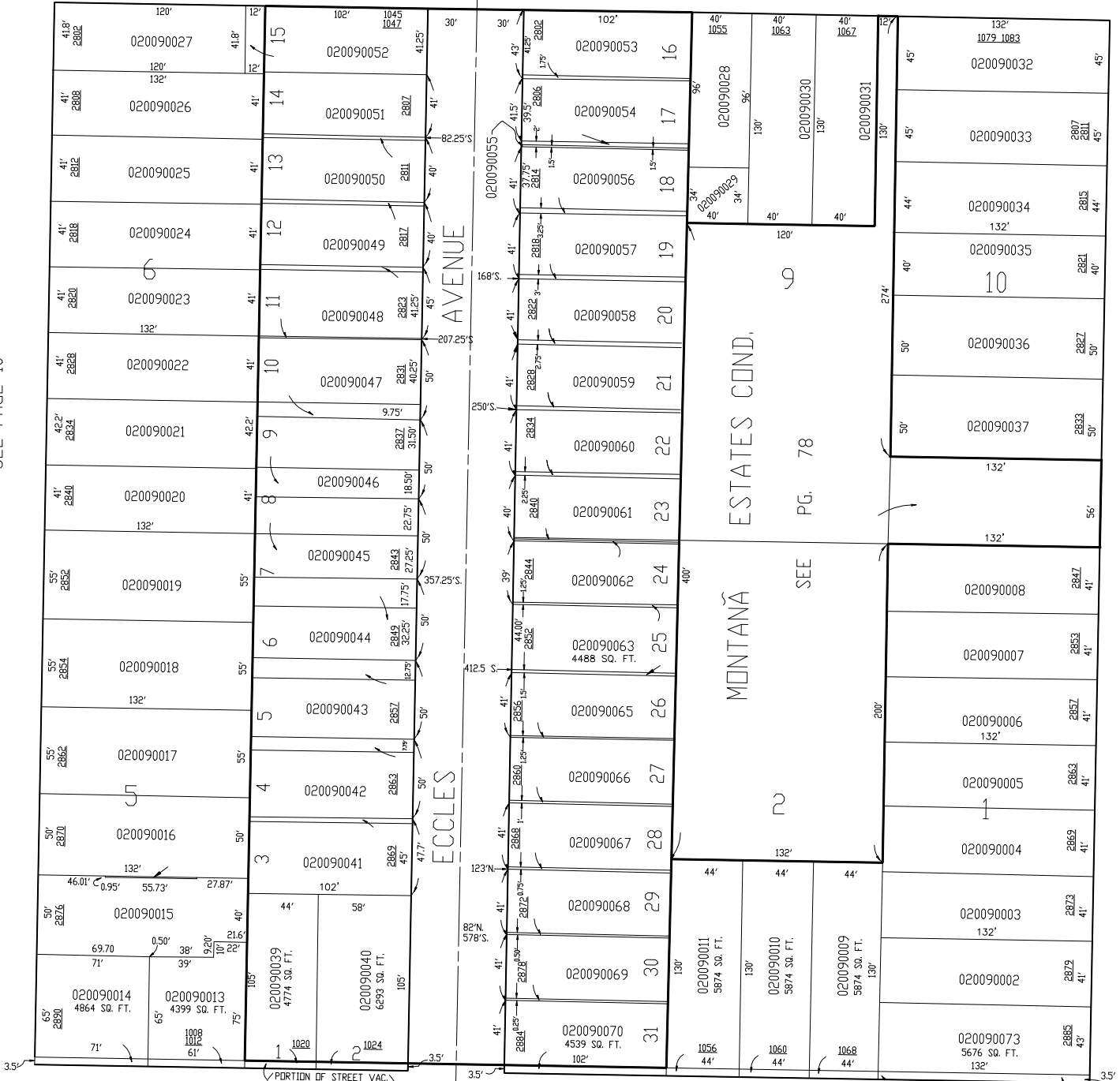
JACKSON AVENUE
SEE PAGE 10

SEE PAGE 6

SEE PAGE 8

SEE PAGE 8

VAV BUREN AVENUE



FOR COMPLETE ENG DATA SEE
ORIGINAL DEDICATION PLAT IN
BOOK 7, PAGE 59 OF RECORDS.

SEE PAGE 6

(PORTION OF STREET VAC.)
28-NOV-94 1739-942
15-FEB-95 1746-2886
NOTE: OGDEN CITY ENG. DEPT. PLAT DATA
SHOWS LOT AS BEING 132' X 330'

(020090001)
462 SQ. FT.